

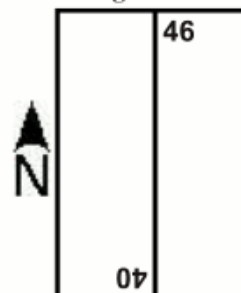
ASKIM TO DIE

MwT24



Askim, Norway, 13th April 1940: The original German plan in Norway was to press forward toward Trondheim and Bergen, leaving Östfold isolated for later care. But the report of strong Norwegian troop concentrations in the Askim-Mysen area convince Falkenhorst that it was necessary to delay the northern thrust and eliminate the Norwegian troops in Östfold. The task was given to I.D. 169. The Germans have to cross the river Glama near Askim to destroy the troops mobilizing at the Fossumströket's fortress. On 13th April, at 05:30 the Jagdkommando Manthey's cross the Fossum bridge. At dawn, the Germans attack from the bridgehead to force the Norwegian defense line at the western outskirts of the town of Askim.

Board Configuration:



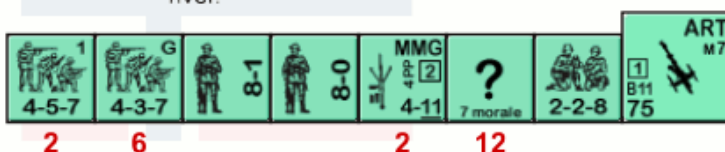
VICTORY CONDITIONS: The Germans win at game end if they control 6 multilevel buildings, provided there are no Good Order Norwegian MMC within 3 hexes of 40W3

Norwegians setup first.

Elements of Askim Detachment, Artillery Regiment 1, [ELR: 2] setup CX Within 4 hexes of 46G8. {SAN: 3}



Group Gleditsch, Artillery Regiment 1: setup on/south of hexrow 46V/40L, east of the river.

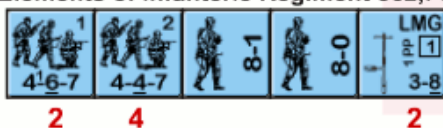


Germans moves first.

Elements of Jagdkommando Manthey, Infanterie Regiment 324, [ELR: 3] setup anywhere on the west side of the river and/or within 6 hexes of 40W3 on the east side. [SAN: 2]



Elements of Infanterie Regiment 362: enter on/after turn 1 on 40W1.



SSR:

1. EC are Ground Snow (E3.72) with no wind at start. The river is not frozen, is Deep and a moderate current flows from south to north. Orchards are Out of Season. A Stone Bridge exists on 40W1/W2 and a

road is running from offboard in 40W0 to 40W3.

2. A +1 LV Hindrance applies to all non-CC attacks during Game turns 1 and 2.

3. Norwegians are subject to Ammunition Shortage (A19.131).

AFTERMATH: Jagdkommando Manthey has to face a defense strong in machine gun and artillery support, but lacking the infantry to protect the flanks of the wide battlefield. Despite the fact that German probing attacks during the morning fails to break the Norwegian Resistance and that they have to face an unsuccessful Norwegian counterattack, at 12:30 it became clear for Gleditsch, the Norwegian commander, that a retreat was necessary. The artillery could retreat in good order but the machine gun company has serious losses. At 15:30 Askim fell.

VASL Images© Rodney Kinney. Used with Permission